

26SCD AND 26SCD-HP SMOKE CONTROL DAMPER

Declaration of Performance (DoP)

Complying with EU Regulation: 305/2011/EEC Construction Products Regulation



CONSTRUCTION PRODUCT	Smoke Control Damper for multi-compartments
INTENDED USE	Smoke Control Damper that are to be used in smoke control systems, in multi-compartment applications, either up to 600°C or at fire temperatures.
HARMONISED STANDARD	EN 12101-8:2011
MANUFACTURER	Advanced Air (UK) Ltd Burrell Way, Thetford, Norfolk IP24 3QU Email projects@advancedair.co.uk Web www.advancedair.co.uk Tel 01842 765 657
SYSTEM OF ASSESSMENT AND VERIFICATION OF CONSTANCY OF PERFORMANCE	System 1
NOTIFIED BODY	The notified body 2831 – BRE carried out the initial inspection of the manufacturing plant and of the production control as well as the continuous surveillance and evaluation of the factory production control according to System 1 of the Construction Products Regulation.
CERTIFICATE OF CONSTANCY OF PERFORMANCE	2831-CPR-P0200 issued on 29th August 2024. 2831-CPR-P0200 appendix issued on 29 th August 2024.

ESSENTIAL CHARACTERISTICS	REQUIREMENT CLAUSES IN BS EN 12101-8	PERFORMANCE LEVEL ACHIEVED	NOTES
Nominal activation conditions/sensitivity	4.2.1.3	Pass	Automatic Activation
Response delay time	4.2.1.4	Pass	Automatic Activation
Operation reliability	4.3.2.2	Pass	Cycles – 300, 10,000 & 20,000 Modulating
FIRE RESISTANCE			
-Integrity	4.1.1 (a)	E	120 minutes
-Insulation	4.1.1 (b)	NPD	No Performance Declared
-Smoke leakage	4.1.1 (c)	ES	120 minutes
-Mechanical stability (under E)	4.1.1 (d)	Pass	
-Maintenance of cross section (under E)	4.1.1 (e)	Pass	
-High operational temperature	4.1.1 (f)	NPD	No Performance Declared
DURABILITY			
-of response delay	4.4.2.1	Pass	
-of operation reliability	4.4.2.2	Pass	

I hereby declare that the 26SCD and 26SCD-HP have been tested and fully comply with EN 12101-8:2011 Smoke and heat control systems – Smoke control dampers. The performance of the product identified above is in conformity with the set of declared performance/s. This declaration of performance is issued, in accordance with Regulation (EU) No 305/2011, under the sole responsibility of the manufacturer identified above.

On behalf of Advanced Air (UK) Ltd:

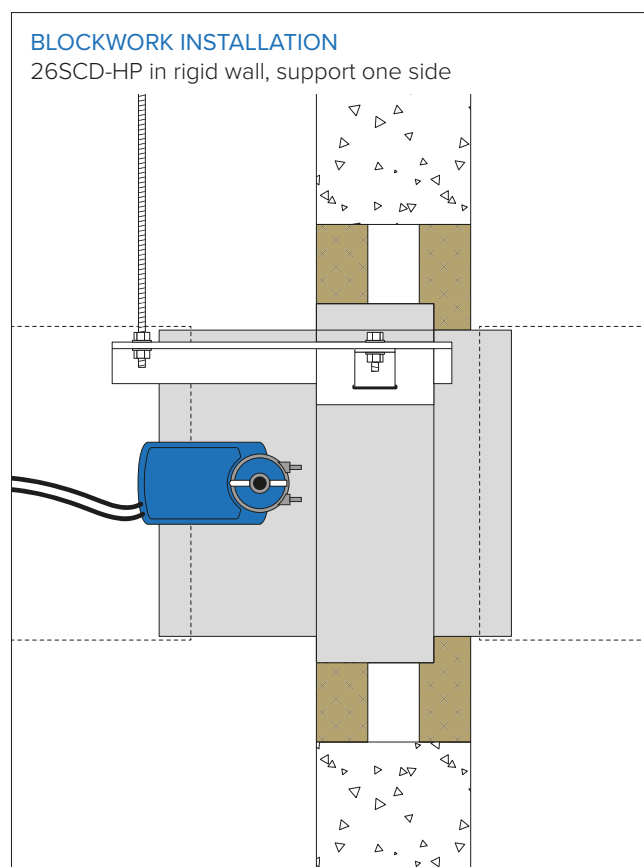
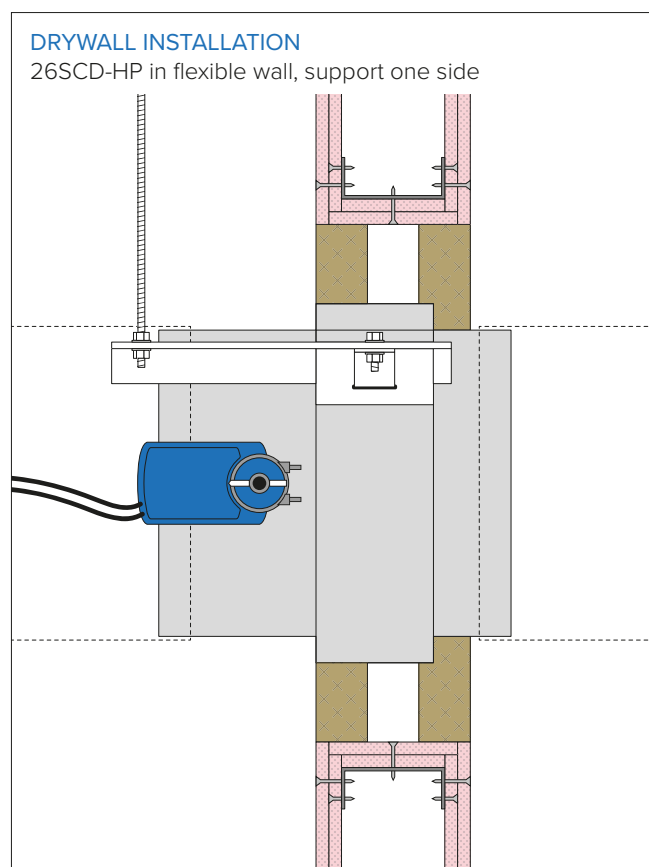
Andrew Sargent
Managing Director
11th September 2024 – Burrell Way



26SCD-HP SMOKE CONTROL DAMPER

Declaration of Performance (DoP)

Complying with EU Regulation: 305/2011/EEC Construction Products Regulation



26SCD IN 2 HOUR WALL – FLEXIBLE CONSTRUCTION WITH AFS BRACKETS, SUPPORT ON ONE SIDE					
Size	Installation method	Supporting construction	Report no.	Test	Performance classification
Up to 1,000 x 1,000mm Single section	AFS	Flexible wall Type A, B & C Minimum 122mm thickness	2019-Efectis-R000824	BS EN 1366-2	E120 (Vedw i↔o) S1000 C₃₀₀ AA Multi E120 (Vedw i↔o) S1000 C₁₀₀₀₀ AA Multi E120 (Vedw i↔o) S1000 C_{Mod} AA Multi
			2020-Efectis-R000602	BS EN 1366-2	
			EFR-19-H-000789-A	BS EN 1366-10	
			EFR-19-H-000789-B	BS EN 1366-10	

26SCD IN 2 HOUR WALL – RIGID CONSTRUCTION WITH AFS BRACKETS, SUPPORT ON ONE SIDE					
Size	Installation method	Supporting construction	Report no.	Test	Performance classification
Up to 1,000 x 1,000mm Single section	AFS	Rigid wall Minimum 122mm thickness	2019-Efectis-R000824	BS EN 1366-2	E120 (Vedw i↔o) S1000 C₃₀₀ AA Multi E120 (Vedw i↔o) S1000 C₁₀₀₀₀ AA Multi E120 (Vedw i↔o) S1000 C_{Mod} AA Multi
			2020-Efectis-R000602	BS EN 1366-2	
			EFR-19-H-000789-A	BS EN 1366-10	
			EFR-19-H-000789-B	BS EN 1366-10	

26SCD-HP SMOKE CONTROL DAMPER

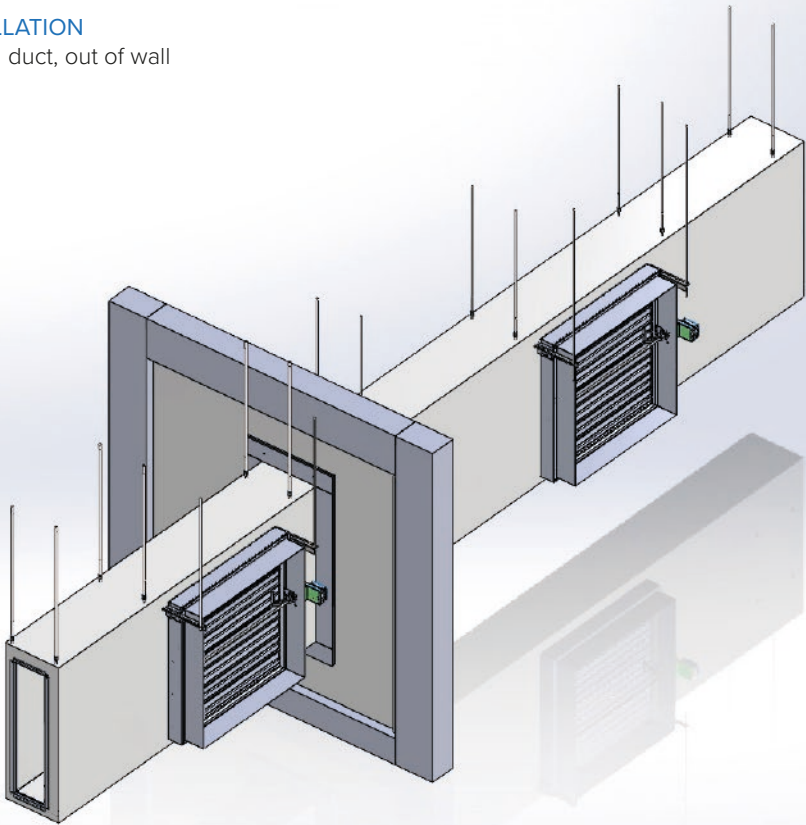
Declaration of Performance (DoP)

Complying with EU Regulation: 305/2011/EEC Construction Products Regulation



OUT OF WALL INSTALLATION

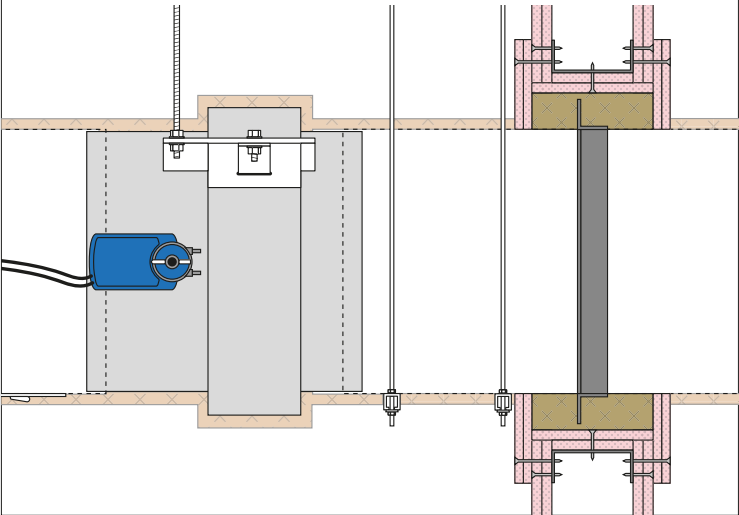
26SCD-HP mounted in duct, out of wall



26SCD MOUNTED IN DUCT, OUT OF WALL					
Size	Installation method	Supporting construction	Test report	Test	Performance classification
Up to 1000 x 1000mm Single section	AFS	Fitted to duct, out of wall	EFR-21-J-002905 RE	BS EN 1366-10	E120 (Vedw i↔o) S1000 C₃₀₀ AA Multi E120 (Vedw i↔o) S1000 C₁₀₀₀₀ AA Multi E120 (Vedw i↔o) S1000 C_{Mod} AA Multi

OUT OF WALL INSTALLATION

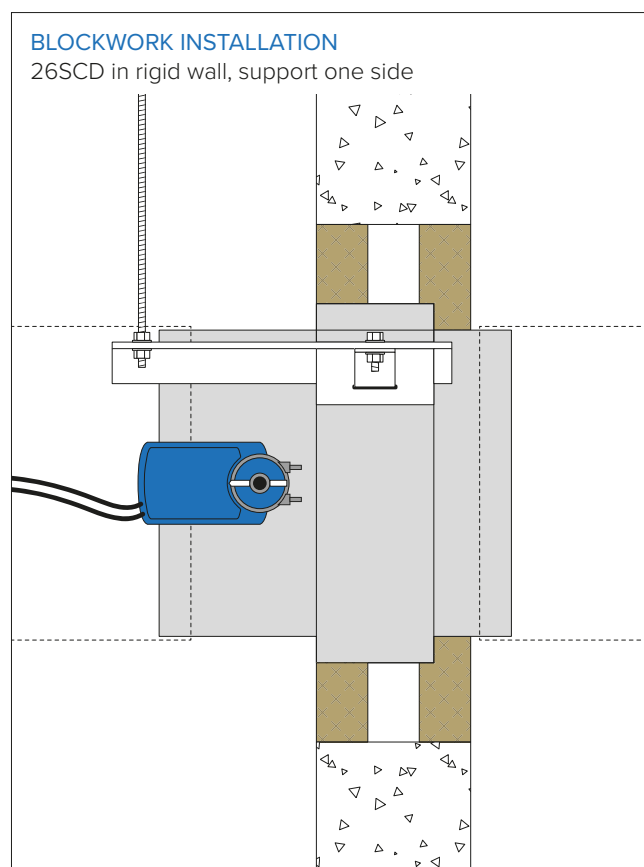
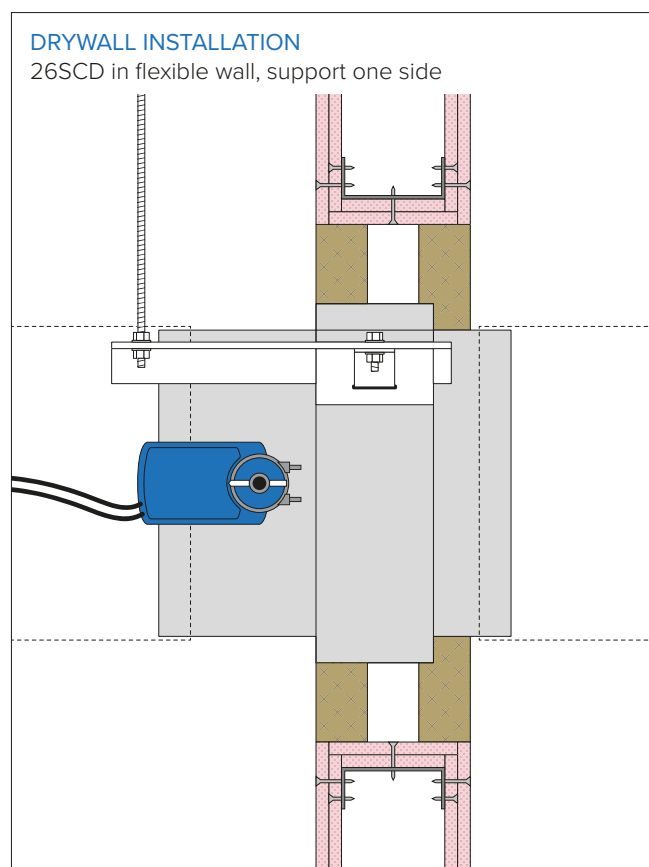
26SCD-HP mounted in duct, out of wall



26SCD SMOKE CONTROL DAMPER

Declaration of Performance (DoP)

Complying with EU Regulation: 305/2011/EEC Construction Products Regulation



26SCD IN 2 HOUR WALL – FLEXIBLE CONSTRUCTION WITH AFS BRACKETS, SUPPORT ON ONE SIDE					
Size	Installation method	Supporting construction	Report no.	Test	Performance classification
Up to 1,000 x 1,000mm Single section	AFS	Flexible wall Type A, B & C Minimum 122mm thickness	2019-Efectis-R000824	BS EN 1366-2	E120 (Vedw i↔o) S500 C₃₀₀ AA Multi E120 (Vedw i↔o) S500 C₁₀₀₀₀ AA Multi E120 (Vedw i↔o) S500 C_{Mod} AA Multi
			2020-Efectis-R000602	BS EN 1366-2	
			EFR-19-H-000789-A	BS EN 1366-10	
			EFR-19-H-000789-B	BS EN 1366-10	

26SCD IN 2 HOUR WALL – RIGID CONSTRUCTION WITH AFS BRACKETS, SUPPORT ON ONE SIDE					
Size	Installation method	Supporting construction	Report no.	Test	Performance classification
Up to 1,000 x 1,000mm Single section	AFS	Rigid wall Minimum 122mm thickness	2019-Efectis-R000824	BS EN 1366-2	E120 (Vedw i↔o) S500 C₃₀₀ AA Multi E120 (Vedw i↔o) S500 C₁₀₀₀₀ AA Multi E120 (Vedw i↔o) S500 C_{Mod} AA Multi
			2020-Efectis-R000602	BS EN 1366-2	
			EFR-19-H-000789-A	BS EN 1366-10	
			EFR-19-H-000789-B	BS EN 1366-10	

26SCD SMOKE CONTROL DAMPER

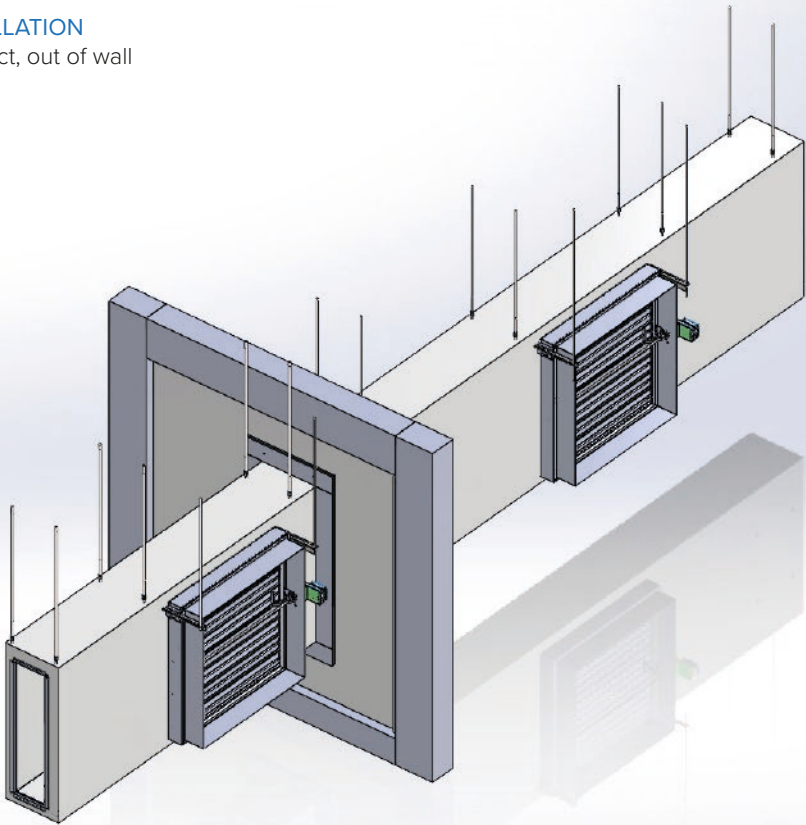
Declaration of Performance (DoP)

Complying with EU Regulation: 305/2011/EEC Construction Products Regulation



OUT OF WALL INSTALLATION

26SCD mounted in duct, out of wall



26SCD MOUNTED IN DUCT, OUT OF WALL					
Size	Installation method	Supporting construction	Test report	Test	Performance classification
Up to 1000 x 1000mm Single section	AFS	Fitted to duct, out of wall	EFR-21-J-002905 RE	BS EN 1366-10	E120 (Vedw i↔o) S500 C ₃₀₀ AA Multi E120 (Vedw i↔o) S500 C ₁₀₀₀₀ AA Multi E120 (Vedw i↔o) S500 C _{Mod} AA Multi

OUT OF WALL INSTALLATION

26SCD mounted in duct, out of wall

